

Jindabyne Public Preschool

Project update | April 2026

Image caption: artist's impression of the Jindabyne Public Preschool (subject to change)



Public preschools program

The NSW Government has committed to boost access to public preschool education across the state. This commitment includes delivering 100 new public preschools and ensuring all new primary schools have a co-located public preschool, helping more children access a preschool program before starting school.

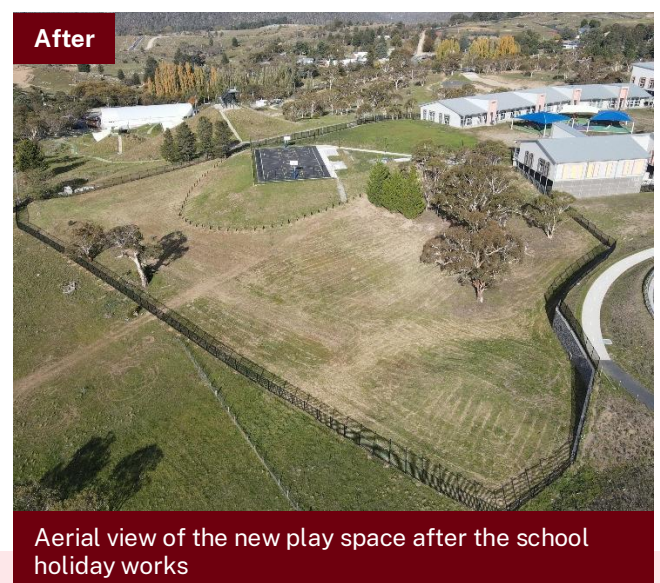
Expanded play space for Jindabyne Public School now open

Over the April 2026 school holidays, we have prepared nearly **8000 m²** of new play space for Jindabyne Public School, responding to school community feedback we received during Term 1.

The work has included:

- installing new fencing and closing fencing gaps
- new posts to delineate biodiversity land from the existing school play space
- building new stairs
- mowing land behind the sports court.

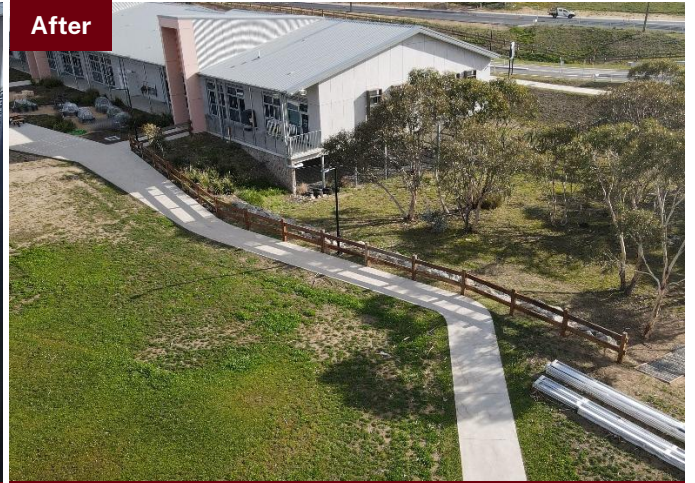
From the beginning of Term 2, students will be able to use new expanded play space to run, play and connect with nature. The school will decide operationally how and when the space is used as play space, subject to conditions of how the land can be used.



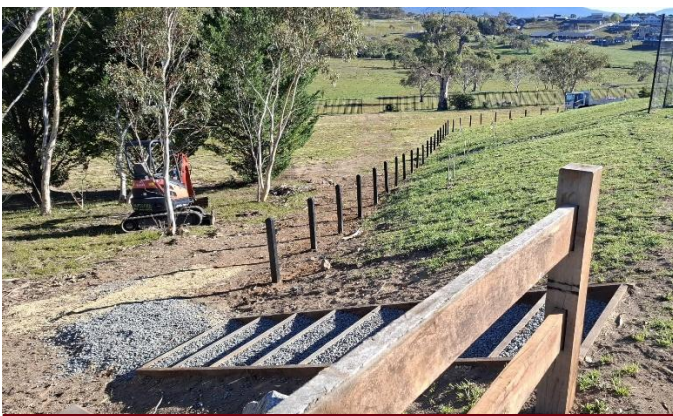
Email: schoolinfrastructure@det.nsw.edu.au
Phone: 1300 482 651
schoolinfrastructure.nsw.gov.au



Fencing posts being installed during the school holidays



Aerial view of the new fencing as installed



The new stairs being installed during the school holidays



View from the new play area looking towards the school and sports court

Public preschool next steps and timeline

- Construction is expected to start in May or June 2026, subject to final construction approvals.
- The preschool will open for operation on Day 1 Term 1 2027.
- We continue to consult and work closely with the school leadership during regular co-ordination meetings.
- We are committed to addressing community feedback and working closely with the school community as we construct the preschool.
- We will continue to update the community on the progress and the exact timing of parking expansion plans.

How can I stay updated?



You can find more information about the project and sign up to our mailing list at edu.nsw.link/JindabynePublicPreschool.

If you have any questions about this project, you can contact School Infrastructure during business hours on the contact details below.