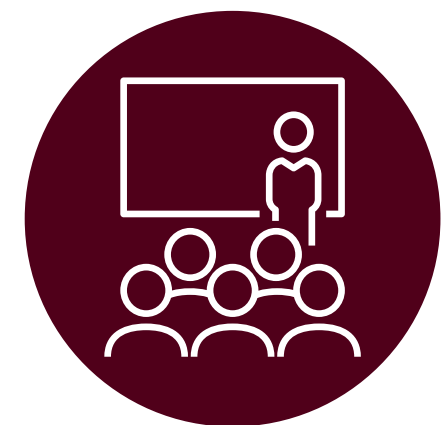


# Bungendore High School

The new permanent Bungendore High School will be built on a site at Birchfield Drive, Bungendore, with the goal of opening in early 2027. The new high school will have contemporary facilities including:



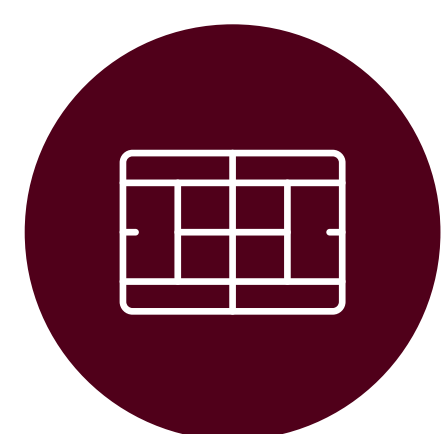
Modern classrooms and support learning classrooms



New front facing administration and staff facilities



A library, hall and canteen



Sports field and agricultural plot



Kiss and drop zones



Artist impression of the new school (subject to change)

## Bungendore High School

For more information

Phone: 1300 482 651

Email: [schoolinfrastructure@det.nsw.edu.au](mailto:schoolinfrastructure@det.nsw.edu.au)

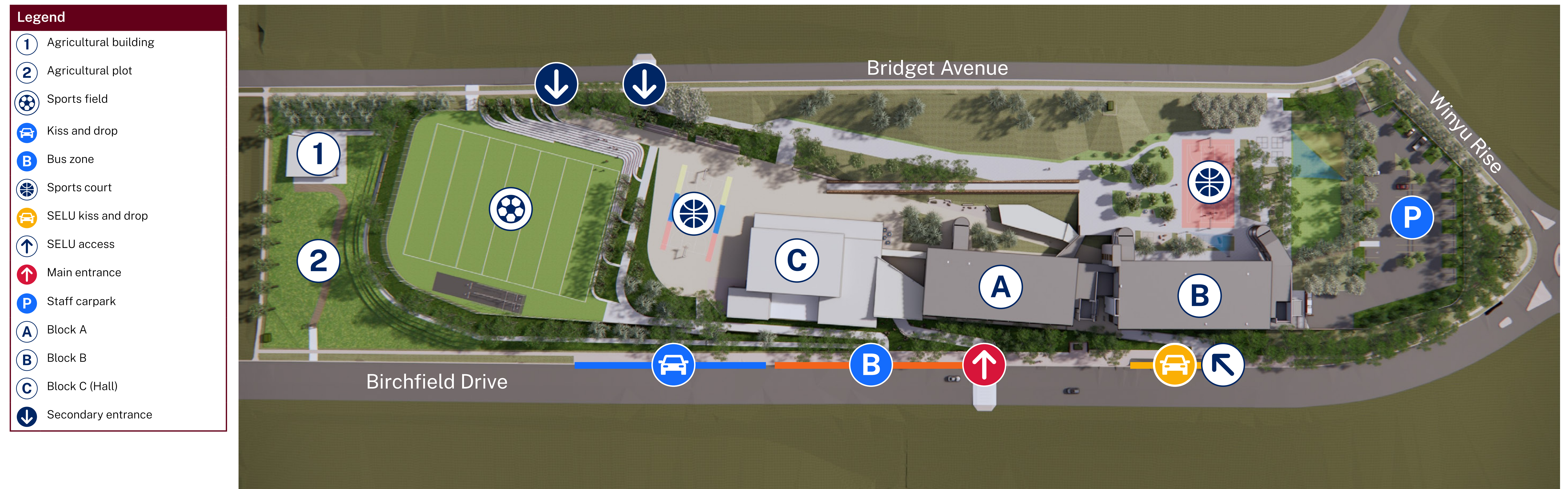
Website: [schoolinfrastructure.nsw.gov.au](http://schoolinfrastructure.nsw.gov.au)



# Permanent high school site plan

Bungendore High School will be located near the residential centre of Bungendore as the town expands in line with plans outlined in the Queanbeyan-Palerang Regional Council's Bungendore Structure Plan 2048.

The new school will be able to accommodate predicted enrolment growth, with the site being approximately 4 hectares in size.



## Bungendore High School

**For more information**

**Phone:** 1300 482 651

**Email:** [schoolinfrastructure@det.nsw.edu.au](mailto:schoolinfrastructure@det.nsw.edu.au)

**Website:** [schoolinfrastructure.nsw.gov.au](http://schoolinfrastructure.nsw.gov.au)



# Temporary high school site plan

Bungendore High School has been operational in purpose built temporary facilities within Bungendore Public School since Day 1 Term 1 2023.

In time for the 2026 school year, the high school will further expand onto the 10 Majara Street site as a temporary solution, while the permanent school is built. This expansion will include the former council building.

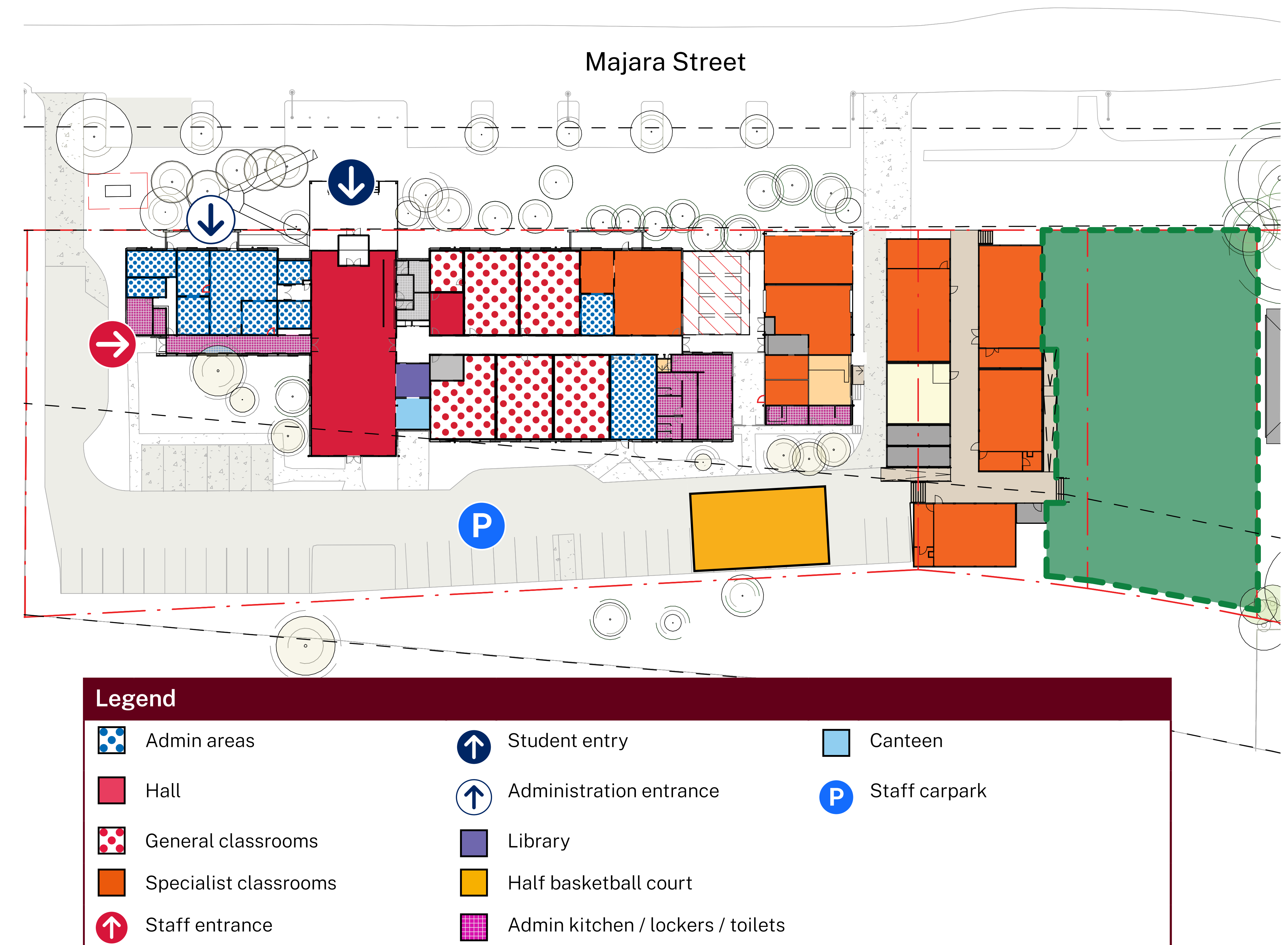
In 2026, the high school will operate as a split campus with years 7, 8 and 11 at the current temporary school (South Campus) and years 9 and 10 at the Majara St site (North Campus).

The expansion will involve converting the former council buildings into:

- 5 classrooms
- A visual arts workshop
- Performance spaces
- New clerical and administration areas
- Staff study and lunchroom
- Library
- Canteen
- Hall
- Staff carpark

Demountable buildings will also be added to the site to provide:

- A classroom
- Science facilities including prep laboratory
- Wood and metal workshop
- Food technology facilities
- Commercial kitchen
- A staff carpark, new playing field and half basketball will also be provided.



## Bungendore High School

**For more information**

**Phone:** 1300 482 651

**Email:** [schoolinfrastructure@det.nsw.edu.au](mailto:schoolinfrastructure@det.nsw.edu.au)

**Website:** [schoolinfrastructure.nsw.gov.au](http://schoolinfrastructure.nsw.gov.au)



# Artist impressions of the permanent high school



Indicative only, subject to change



Indicative only, subject to change

## Bungendore High School

For more information

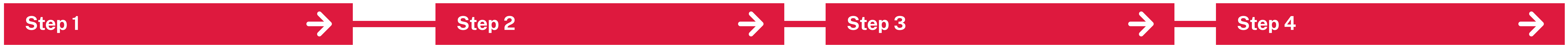
Phone: 1300 482 651

Email: [schoolinfrastructure@det.nsw.edu.au](mailto:schoolinfrastructure@det.nsw.edu.au)

Website: [schoolinfrastructure.nsw.gov.au](http://schoolinfrastructure.nsw.gov.au)



# How standardised learning hub layouts work in practice

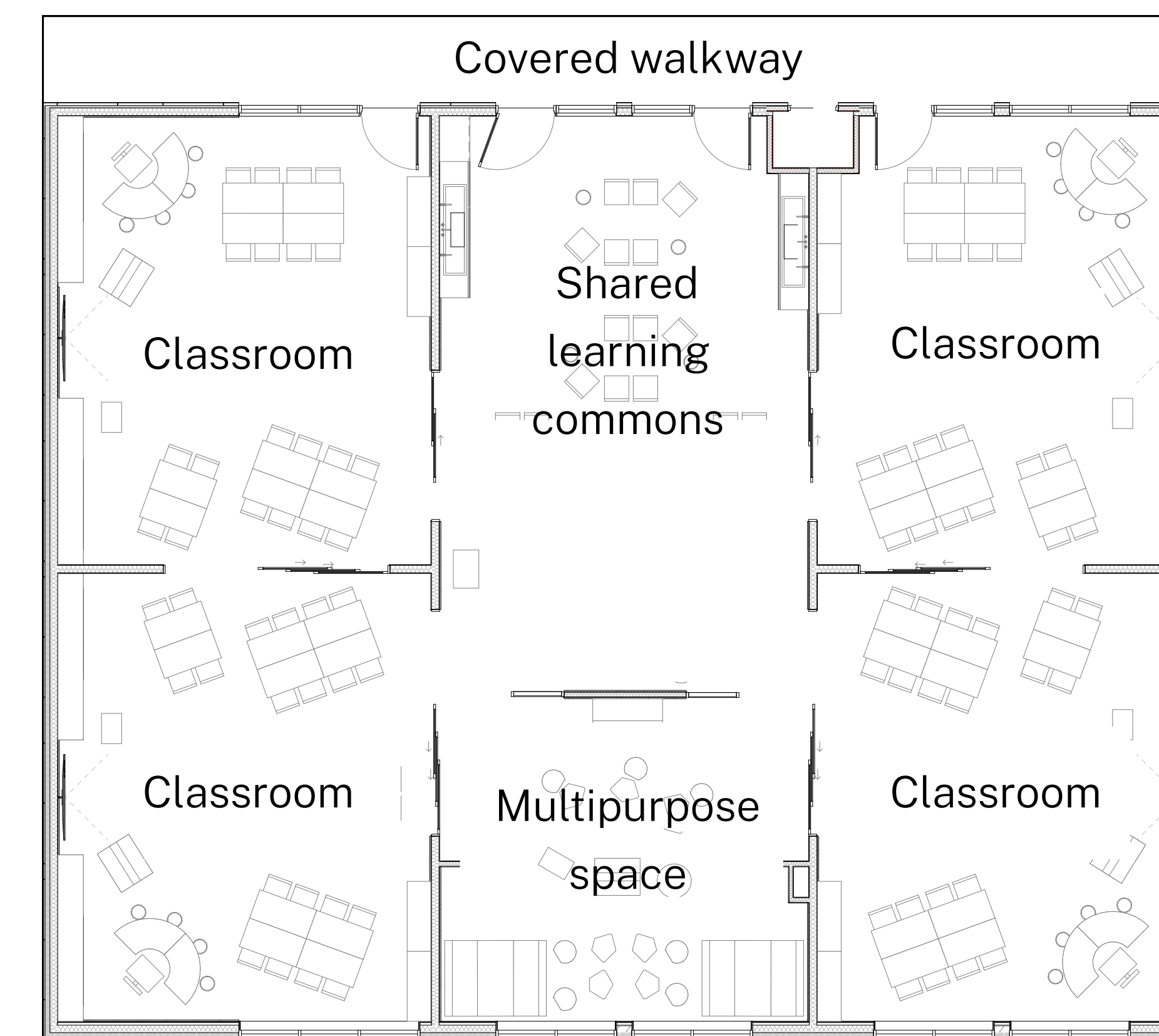
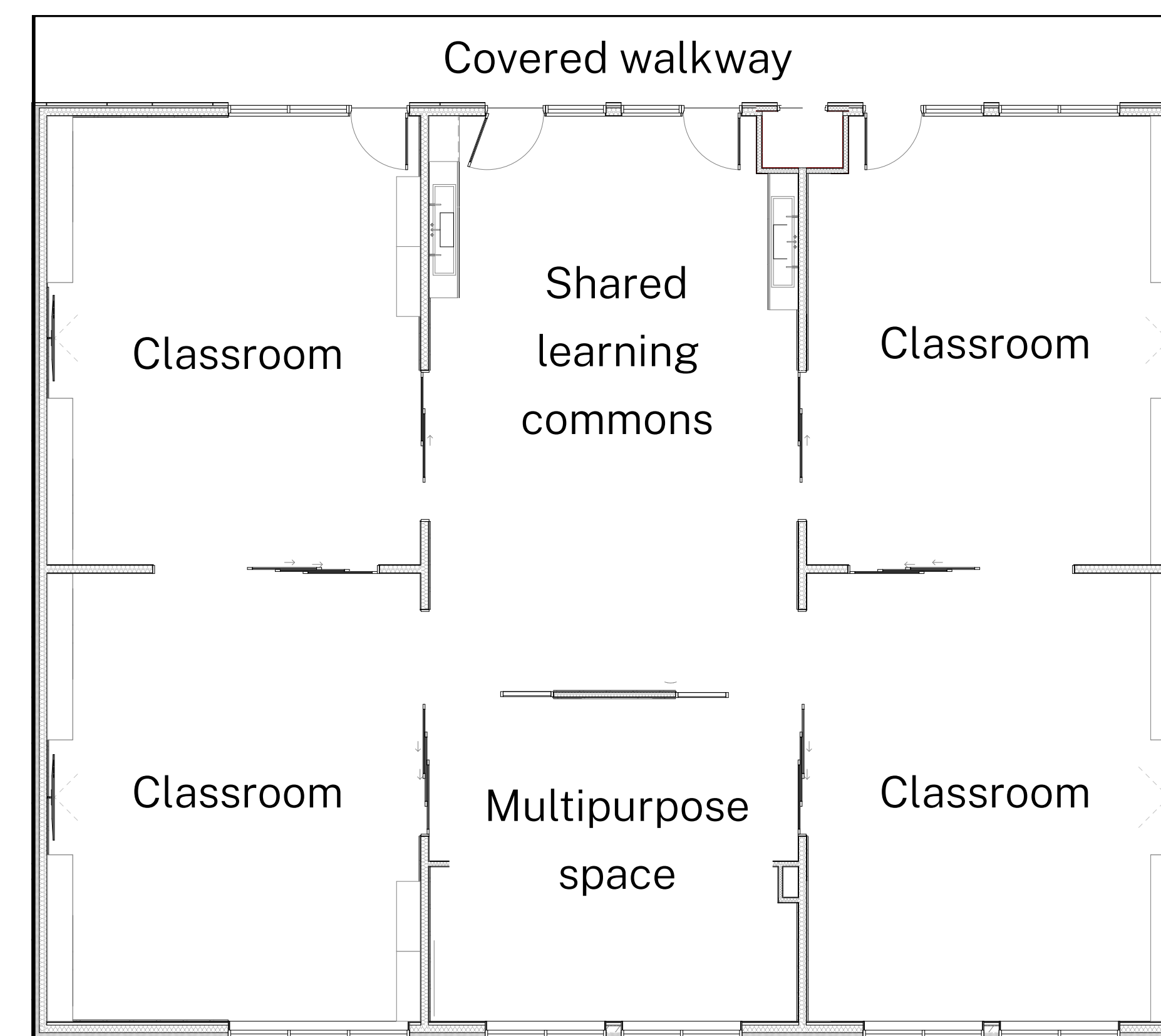
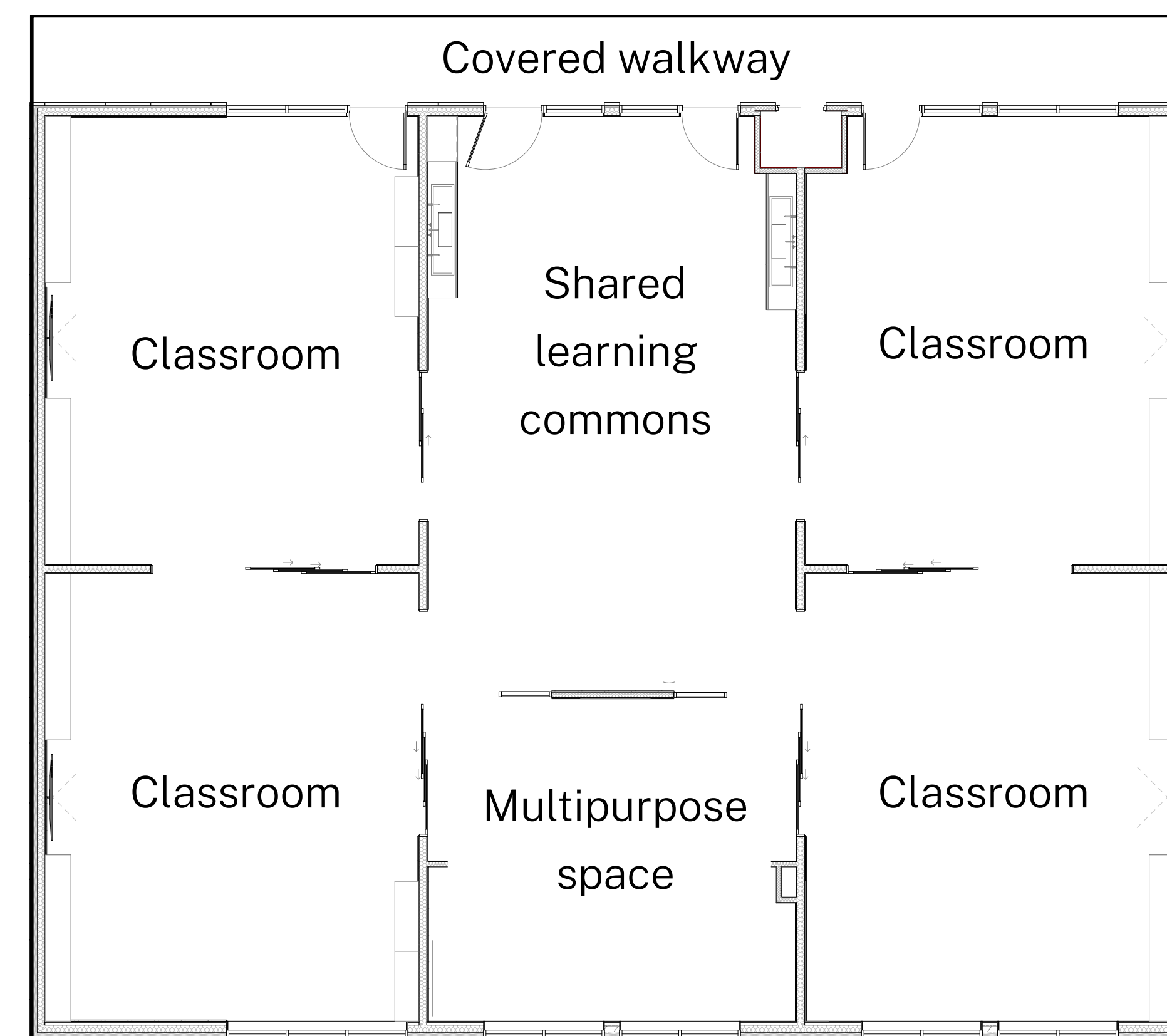


Standardised design for a school learning hub, featuring 4 classrooms and a learning commons.

The design is modified to suit the school context outlined in the education rationale. Schools can include practical activity areas (PAAs), STEM spaces or other multi-purpose spaces (MPSs) that support collaboration, preparation or sensory needs.

Furniture settings are selected to align to local teaching and learning requirements. Furniture selection is supported by professional learning and other resources.

From a 2D plan to a flexible learning space, ready for students to engage in their learning activities.

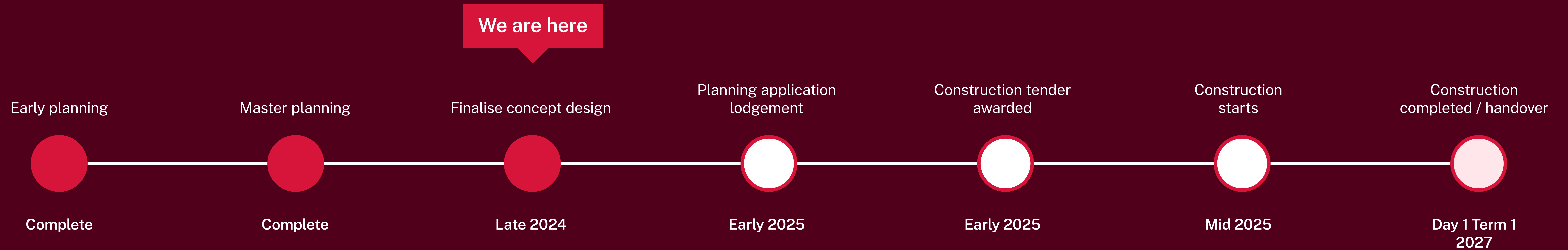


## Bungendore High School

**For more information**  
 Phone: 1300 482 651  
 Email: [schoolinfrastructure@det.nsw.edu.au](mailto:schoolinfrastructure@det.nsw.edu.au)  
 Website: [schoolinfrastructure.nsw.gov.au](http://schoolinfrastructure.nsw.gov.au)



# Project timeline



## More information

You can find more information about the project at [edu.nsw.link/BungendoreHS](https://edu.nsw.link/BungendoreHS) or by scanning the QR code.

If you have any questions about this project, you can contact School Infrastructure during business hours on the contact details below.

## Bungendore High School

**For more information**

**Phone:** 1300 482 651

**Email:** [schoolinfrastructure@det.nsw.edu.au](mailto:schoolinfrastructure@det.nsw.edu.au)

**Website:** [schoolinfrastructure.nsw.gov.au](https://schoolinfrastructure.nsw.gov.au)

